



**Potts Point, NSW**  
506/2A Elizabeth Bay Road

**1**  
BED

**1**  
BATH

**0**  
CAR

**LAING**

**DEPOSIT TAKEN - 'Gazebo' - Unique Style 2 level 1 bedroom Apartment**

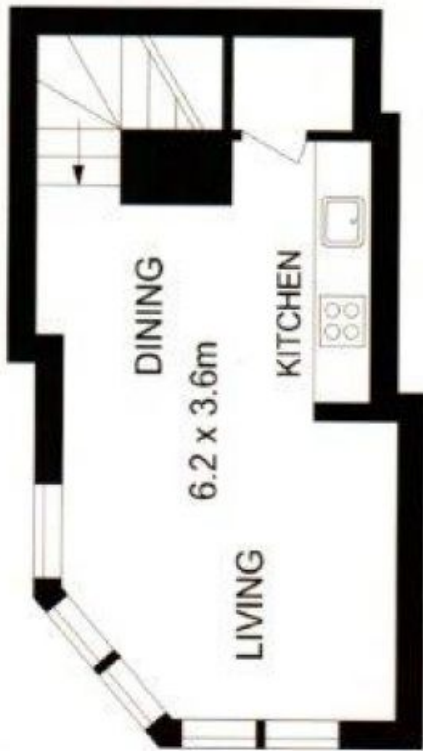
This modern and unique 2 level one bedroom apartment is located in the sought after 'Gazebo' building which offers resort style facilities such as a 20 metre lap pool, gym, sauna, spa and concierge. Located on the 5th floor, features include;

- Bright and sunny 2 level apartment
- Large bedroom with built ins
- Modern bathroom
- Open plan kitchen, dining and lounge area with floor boards
- Internal laundry
- Ducted air-conditioning
- Within minutes to shops, cafes, parks, transport and cosmopolitan Macleay Street

**LEASED**

**Contact:** David Zavaglia  
0425 25 28 71

**Type:** Apartment  
**Date Available:** 19/11/2014  
**Bond:** \$2320  
<http://www.laing.com.au>



**UPPER LEVEL**



**LEVEL FIVE**



Plans shown are only indicative of layout. Dimensions are approximate.

**Potts Point, NSW**  
506/2A Elizabeth Bay Road