



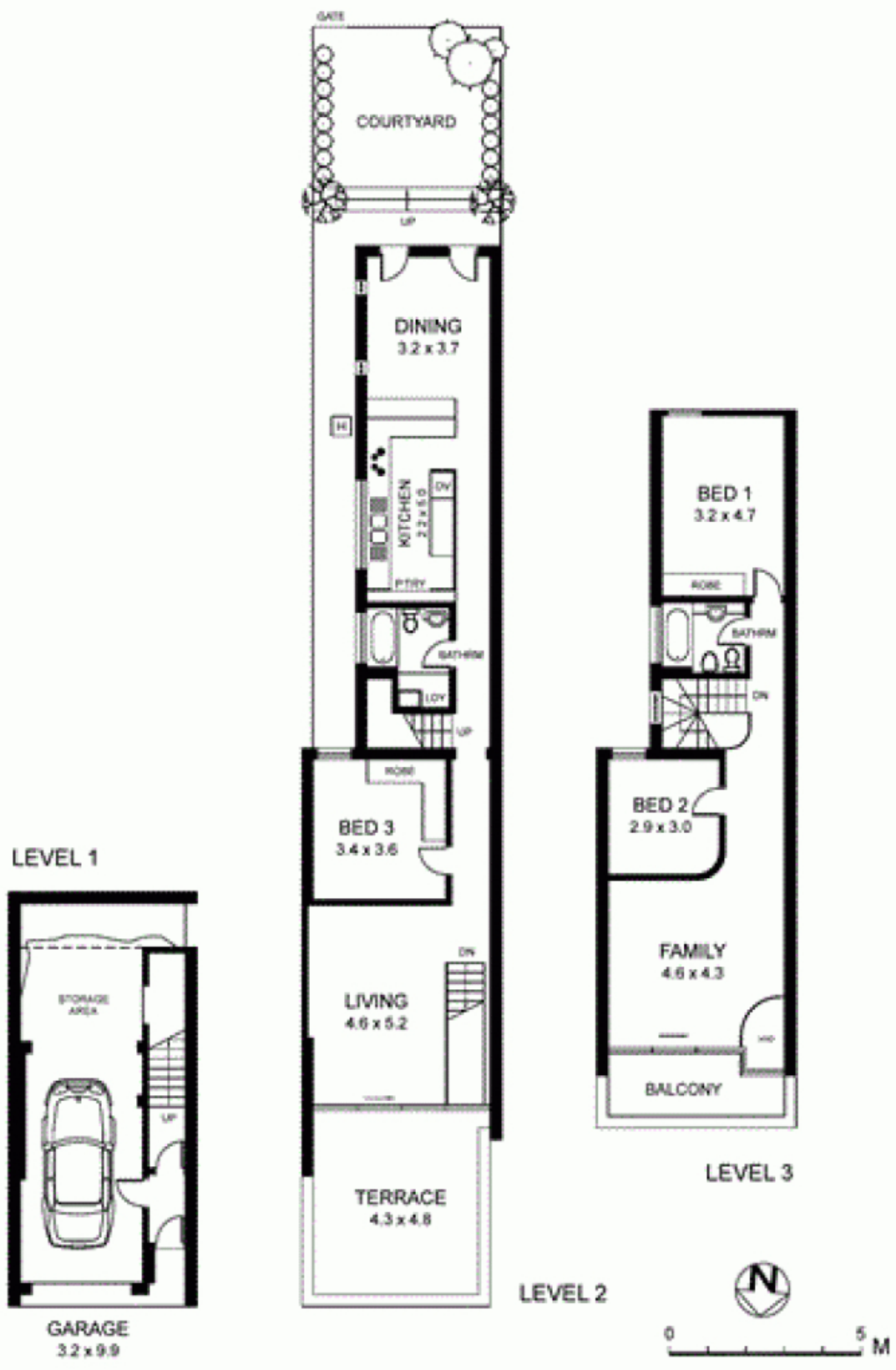
Woollahra, NSW
12 Fletcher Street

3 BED	2 BATH	1 CAR	 LAING
-----------------	------------------	-----------------	--

Modern Parkside 3 Bedroom Terrace
Set in a quiet leafy enclave just footsteps from picturesque Cooper Park, Bellevue Road village shops and the retail hub of Bondi Junction, this generous residence presents a contemporary, low-maintenance take on terrace living. Gazing due-north over the park's treetops, the sun-soaked, wonderfully convenient home is lovely and comfortable.

It contains three bedrooms and two bathrooms with baths. The light-filled lounge room opens to a large northerly terrace while the open-plan gas kitchen and dining space open to a private rear courtyard. Upstairs, a versatile additional living room has its own balcony. Features include an oversized garage with storage space, parquet floors, built-in robes and excellent cross-flow ventilation.

LEASED
Contact: Vicki Laing
0411 88 77 60
Type: Terrace
Date Available: 17/07/2016
Bond: \$5400
<http://www.laing.com.au>



PLANS ARE INDICATIVE OF LAYOUT AND SHOULD NOT BE TAKEN AS AN EXACT REPRESENTATION OF THE PROPERTY. DIMENSIONS AND ASPECT ARE APPROXIMATE.

12 FLETCHER STREET

WOOLLAHRA

Plans shown are only indicative of layout. Dimensions are approximate.

Woollahra, NSW
12 Fletcher Street