



Elizabeth Bay, NSW

36A/100 Elizabeth Bay Rd

1
BED

1
BATH

1
CAR



LAING

Exclusive Harbourside living in an renowned architectural landmark

On the third floor of the landmark Harry Seidler designed 'International Lodge', this sun-drenched apartment is located along Elizabeth Bay's prestigious harbourside loop, footsteps from the foreshore and a stroll to Potts Point's cosmopolitan cafe/dining scene.

Features include:

Open plan layout, expansive wraparound windows capturing abundant sunlight

Upgraded kitchen with stylish marble benches and quality modern appliances

Elegantly renovated fully-tiled bathroom, with internal laundry facilities

Generously sized bedroom, lift access, secure undercover parking space

LEASED

Contact: Vicki Laing
0411 88 77 60

Type: Unit

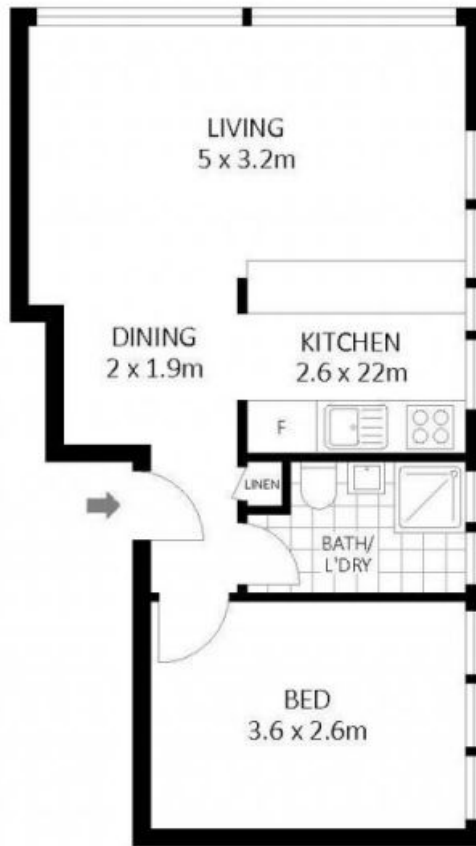
Date Available: 12/09/2017

Bond: \$2400

<http://www.laing.com.au>



BASEMENT



LEVEL THREE



APPROX. INT: 40m²

Scale shown in meters. All dimensions herein are approximate and gathered from sources believed to be reliable. Whilst every effort is made for the accuracy of our floor plans, interested parties should rely on their own enquiries.

Plans shown are only indicative of layout. Dimensions are approximate.

Elizabeth Bay, NSW
36A/100 Elizabeth Bay Rd