



Paddington, NSW
88 Boundary Street

4 BED **2** BATH **1** CAR  **LAING**

Chic Designer Terrace - DEPOSIT TAKEN

Beautifully refurbished with a tasteful combination of classic and contemporary details, this three-storey terrace is set in a wonderfully cosmopolitan location. Featuring prized off-street parking, it's surrounded by great restaurants and cafes, including the famed Neild Avenue eatery, with Rushcutters Bay Park just moments away. It contains four bedrooms, one with a lacework balcony, along with a mosaic tiled bathroom and a guest WC.

Gracious formal lounge and dining rooms retain all of their traditional grandeur, with high ceilings and twin fireplaces. Encompassing a contemporary black granite gas kitchen, the atrium-style casual living space opens to a Tuscan-inspired courtyard garden with a water feature. Additional details include floorboards, built-in wardrobes, a gas bayonet, oversized auto security parking and an interior atrium taking advantage of northerly sun.

LEASED

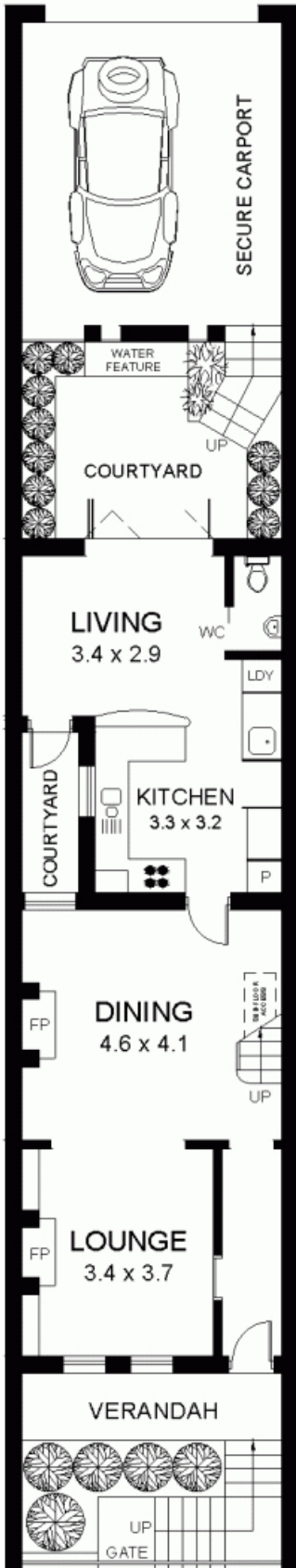
Contact: David Zavaglia
0425 25 28 71
Type: Terrace
Date Available: 11/08/2012
Bond: \$4760
<http://www.laing.com.au>

PLANS ARE INDICATIVE OF LAYOUT AND SHOULD NOT BE TAKEN AS AN EXACT REPRESENTATION OF THE PROPERTY. DIMENSIONS AND ASPECT ARE APPROXIMATE.

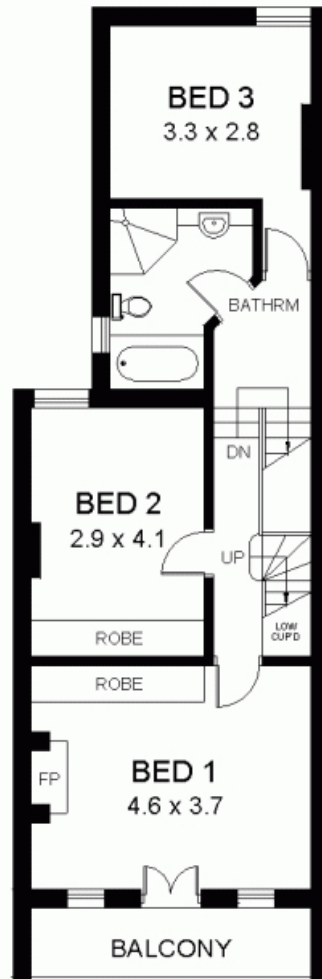
88 BOUNDARY STREET

PADDINGTON

0 5 M



GROUND FLOOR



FIRST FLOOR



LOFT

Plans shown are only indicative of layout. Dimensions are approximate.

Paddington, NSW
88 Boundary Street