



Elizabeth Bay, NSW

72/27 Ithaca Road

0
BED

1
BATH

0
CAR

 LAING

Views

- This north and east facing Strata Studio is bathed in sunshine.
- There are splendid views of Elizabeth Bay, the Harbour, Bradleys Head and to North Head in the distance.
- An elevated position and ideally located near Elizabeth Bay Cellars, corner store, cafes and Beare Park.
- Modern kitchen with electric oven, gas cook top and dishwasher.
- Security access, lift and common laundry.

Inspect: As Advertised or By Appointment

Auction: Tuesday 7 May at 6.00pm

Registration from 5.30pm

Venue: Laing Real Estate

Auction: Tue, 7 May 2019 @ 6:00pm

Laing Real Estate

Council Rates: \$1,047/year (approx)

Water Rates: \$720/year (approx)

Strata Fees: \$3,477/year (approx)

View: Wed, 24 Apr 2019 @ 12:00 pm - 12:30 pm

Sat, 27 Apr 2019 @ 12:00 pm - 12:30 pm

Thu, 2 May 2019 @ 12:00 pm - 12:30 pm

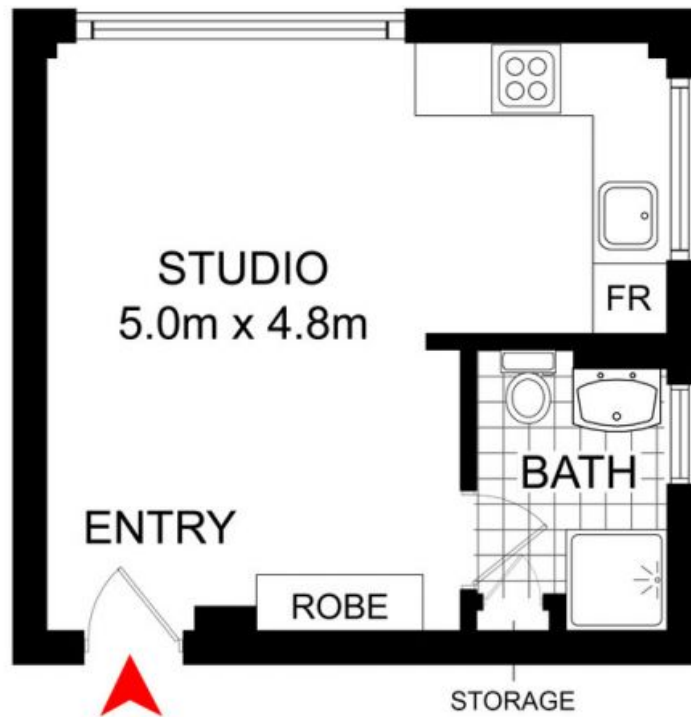
Sat, 4 May 2019 @ 12:00 pm - 12:30 pm

Contact: Tony Dowling

0411 402 531

Type: Studio

<http://www.laing.com.au>



LEVEL SEVEN



72/27 ITHACA ROAD,
ELIZABETH BAY

DISCLAIMER: WE HAVE OBTAINED ALL INFORMATION IN THIS DOCUMENT FROM SOURCES WE BELIEVE TO BE RELIABLE; HOWEVER, WE CANNOT GUARANTEE ITS ACCURACY. PROSPECTIVE PURCHASERS ARE ADVISED TO CARRY OUT THEIR OWN INVESTIGATIONS

Plans shown are only indicative of layout. Dimensions are approximate.

Elizabeth Bay, NSW
72/27 Ithaca Road