



Woollahra, NSW
17/204-232 Jersey Road

2
BED

1
BATH

0
CAR

LAING

'Fitzroy Place' Modern Apartment with Leafy Outlook

Fresh airy interiors featuring a neutral Greek inspired palette add to the appeal of this 2 bedroom strata apartment with leafy outlook from all main rooms. Filled with light, it occupies the N/E corner position of this well maintained security building with direct access from Jersey Road and situated in a premier lifestyle precinct just a short stroll to Queen Street village and Edgecliff shops, buses and trains.

With excellent cross flow ventilation and b/in storage, the apartment has an open-plan kitchen, living, dining area with opening to a sunlit balcony. 2 double bedrooms (one with b/ins) and combined bathroom/laundry. Move right in and feel at home straight away.

Details Vicki Laing 0411 88 77 60

Expressions of Interest

Council Rates: \$1,520/year (approx)

Water Rates: \$720/year (approx)

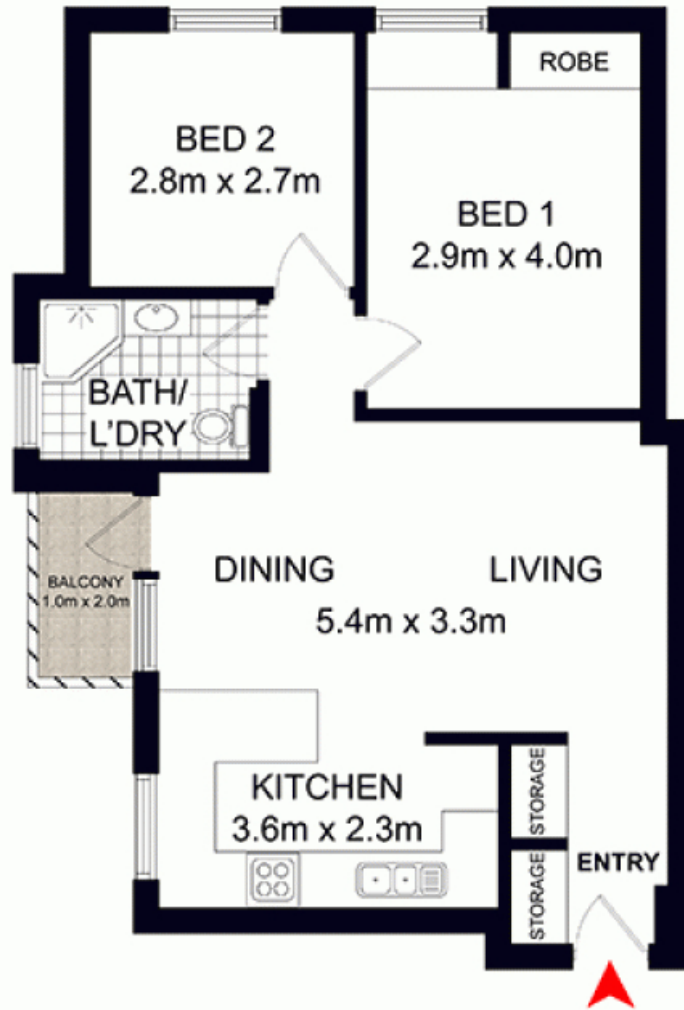
Strata Fees: \$3,057/year (approx)

View: Sat, 24 Aug 2019 @11:00 am - 11:30 am

Contact: Vicki Laing
0411 88 77 60
Tony Dowling
0411 402 531

Type: Apartment

<http://www.laing.com.au>



ELEVATED GROUND FLOOR



17/204 JERSEY ROAD,
WOOLLAHRA

DISCLAIMER: WE HAVE OBTAINED ALL INFORMATION IN THIS DOCUMENT FROM SOURCES WE BELIEVE TO BE RELIABLE. HOWEVER, WE CANNOT GUARANTEE ITS ACCURACY. PROSPECTIVE PURCHASERS ARE ADVISED TO CARRY OUT THEIR OWN INVESTIGATIONS

Plans shown are only indicative of layout. Dimensions are approximate.

Woollahra, NSW
17/204-232 Jersey Road