



## Elizabeth Bay, NSW

11/90 Elizabeth Bay Road

0  
BED

1  
BATH

0  
CAR



### SOLD by TONY DOWLING 0411 402 531

Brentwood Gardens.

- Strata Studio opposite parkland.
- Quiet location and pleasant leafy outlook.
- New kitchen with dishwasher and washing machine.
- Top floor with good natural light.

Auction: Tuesday 6th August 2019 at 6.00pm

Registration from 5.30pm

Venue: Laing Real Estate

Inspect: Saturday and Thursday 12.00-12.30pm or By Appointment

Details: Tony Dowling

0411 402 531

8353 8314

### SOLD

**Council Rates:** \$1,034/year (approx)

**Water Rates:** \$688/year (approx)

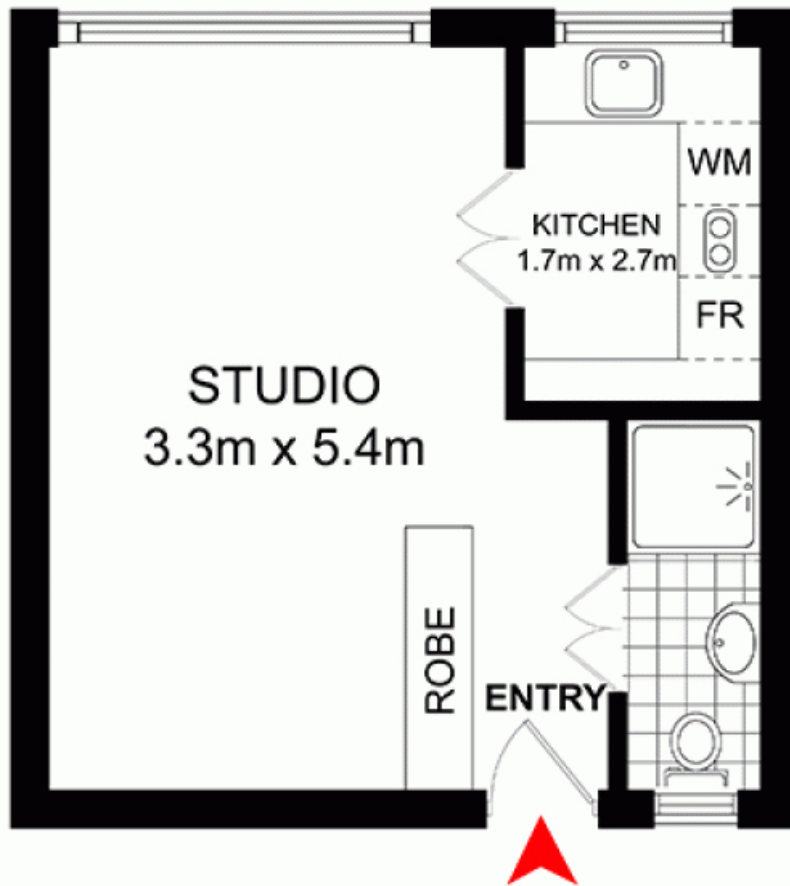
**Strata Fees:** \$2,564/year (approx)

**Contact:** Tony Dowling  
0411 402 531

**Type:** Studio

**Sold Date:** 06/08/2019

<http://www.laing.com.au>



## TOP FLOOR



11/90-92 ELIZABETH BAY ROAD,  
ELIZABETH BAY

DISCLAIMER: WE HAVE OBTAINED ALL INFORMATION IN THIS DOCUMENT FROM SOURCES WE BELIEVE TO BE RELIABLE. HOWEVER, WE CANNOT GUARANTEE ITS ACCURACY. PROSPECTIVE PURCHASERS ARE ADVISED TO CARRY OUT THEIR OWN INVESTIGATIONS

Plans shown are only indicative of layout. Dimensions are approximate.

**Elizabeth Bay, NSW**  
11/90 Elizabeth Bay Road