



## Potts Point, NSW

Lot 42 and 43/46A Macleay Street

0  
BED

0  
BATH

CAR



### Exceptional Potts Point Retail Spaces 86sqm + 49sqm

- Two spaces to be leased separately
- Lot 42 (Macleay Street Frontage) 86 sqm
- Lot 43 (Crick Avenue Frontage) 49 sqm
- Massive exposure with double height glass frontages
- High pedestrian traffic day and night
- Suit a wide variety of uses (STCA)

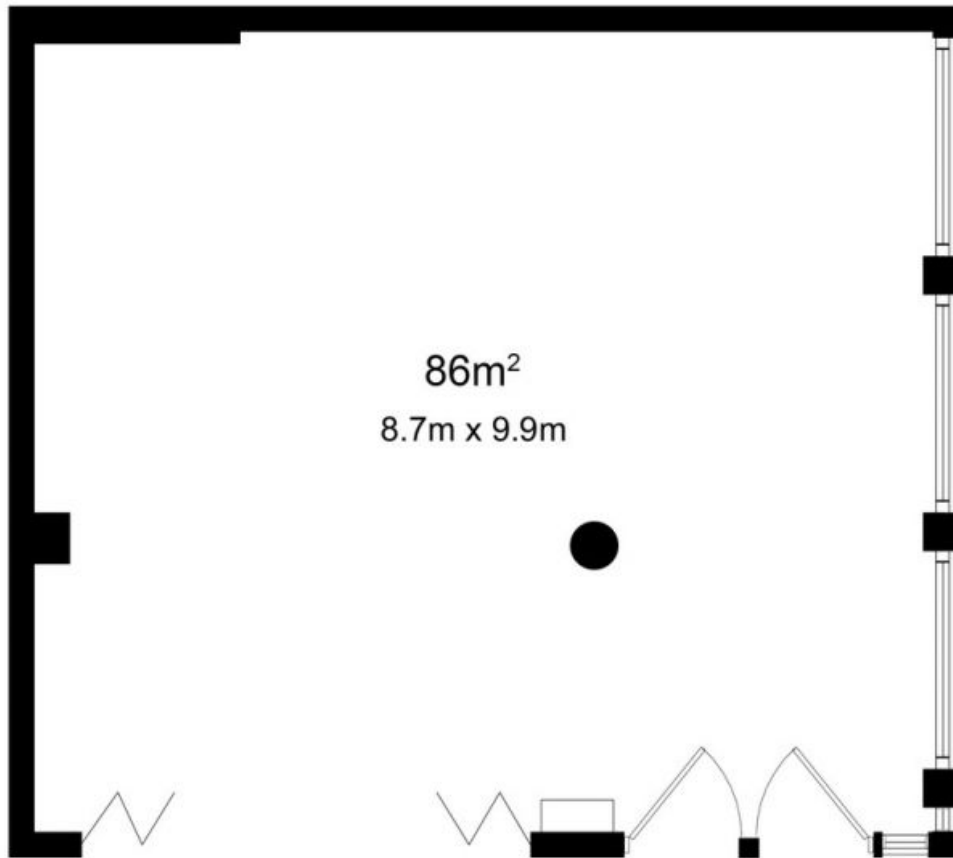
Details: Anthony Birdsall 0411 190 400  
Jason Eccleston 0478 159 515

### Price Upon Application

Contact: Anthony Birdsall  
0411 190 400

Type: Retail

<http://www.laing.com.au>



LOT 42/46A MACLEAY STREET,  
POTTS POINT

DISCLAIMER: WE HAVE OBTAINED ALL INFORMATION IN THIS DOCUMENT FROM SOURCES WE BELIEVE TO BE RELIABLE. HOWEVER, WE CANNOT GUARANTEE ITS ACCURACY. PROSPECTIVE PURCHASERS ARE ADVISED TO CARRY OUT THEIR OWN INVESTIGATIONS

Plans shown are only indicative of layout. Dimensions are approximate.

**Potts Point, NSW**  
Lot 42and43/46A Macleay Street