



**Potts Point, NSW**  
1209/73 Victoria Street

<b>1</b> BED	<b>1</b> BATH	<b>1</b> CAR	 <b>LAING</b>
-----------------	------------------	-----------------	--

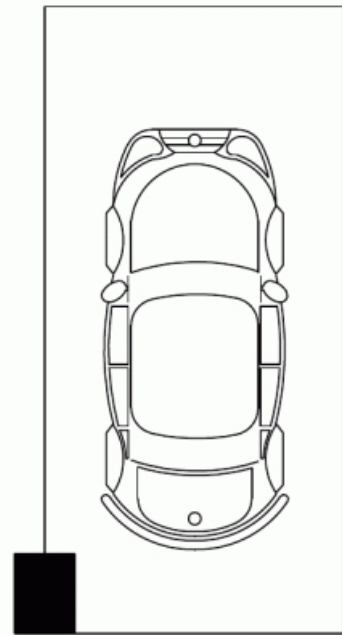
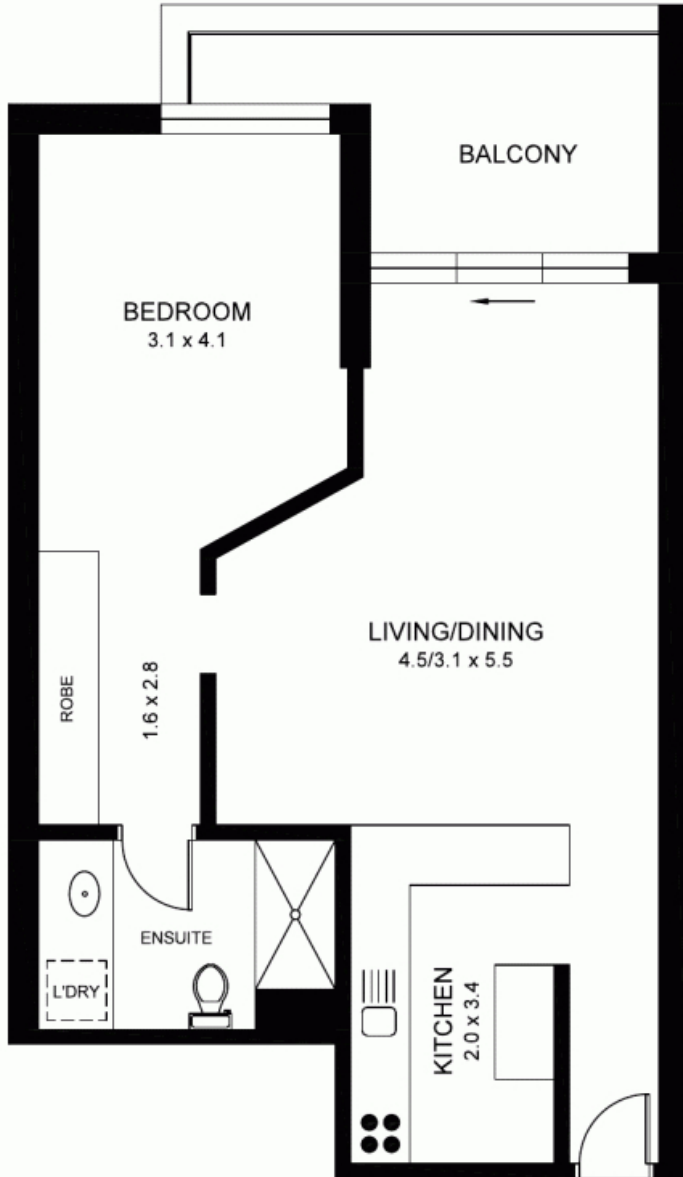
**SOLD BY MATTHEW ALLERTON 0412 790 578 AND VICKI LAING 0411 88 77 60**

- Suburb 1 bedroom strata apartment in security building
- Opera House / Harbour Bridge & city skyline views
- Magnificently upgrade glass balcony to sit & enjoy Sydney's iconic skyline
- Air conditioned
- Tidy bathroom & internal laundry
- Large kitchen with dishwasher & large counter space
- Direct access to secure parking 19sqm approx.
- Gardens, pool & sauna in complex
- Apartment size 60sqm approx.

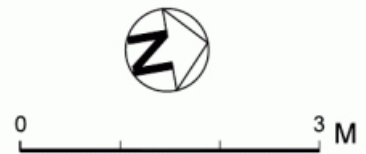
**SOLD**

- Council Rates:** \$944/year (approx)
- Water Rates:** \$743/year (approx)
- Strata Fees:** \$6,246/year (approx)
- Contact:** Vicki Laing  
0411 88 77 60
- Type:** Apartment
- Sold Date:** 05/03/2016
- <https://www.laing.com.au>

Details: Matthew Allerton



SECURE UNDERCOVER  
CARSPACE



PLANS ARE INDICATIVE OF LAYOUT AND SHOULD NOT BE TAKEN AS AN EXACT REPRESENTATION OF THE PROPERTY. DIMENSIONS AND ASPECT ARE APPROXIMATE.

1209/73 VICTORIA STREET

POTTS POINT

Plans shown are only indicative of layout. Dimensions are approximate.

**Potts Point, NSW**  
1209/73 Victoria Street