



Woolloomooloo, NSW

1304/22 Sir John Young Crescent

2
BED

2
BATH

1
CAR

 LAING

SOLD AT AUCTION \$1,415,000

Mesmerising 180-degree views from the city skyline across The Domain to the Bridge, Opera House and Garden Island form a dramatic backdrop to this superb lifestyle offering. Found on the 13th floor of the distinguished security building 'Domain Apartments', it's just footsteps to the Art Gallery of NSW, a fabulous array of cafes, Finger Wharf dining and CBD attractions. Wonderful executive facilities include a gym, spa, sauna, onsite concierge, a common courtyard garden and a dramatic rooftop entertaining area with magical views.

It contains two spacious bedrooms with mirrored built-in robes and a large marble bathroom with a bath. Encompassing an open-plan granite kitchen with a large pantry, the sun-soaked glass-embraced entertaining space opens to a covered balcony perfectly capturing the view. Features include security parking with security lift access, a separate internal laundry, ducted

SOLD

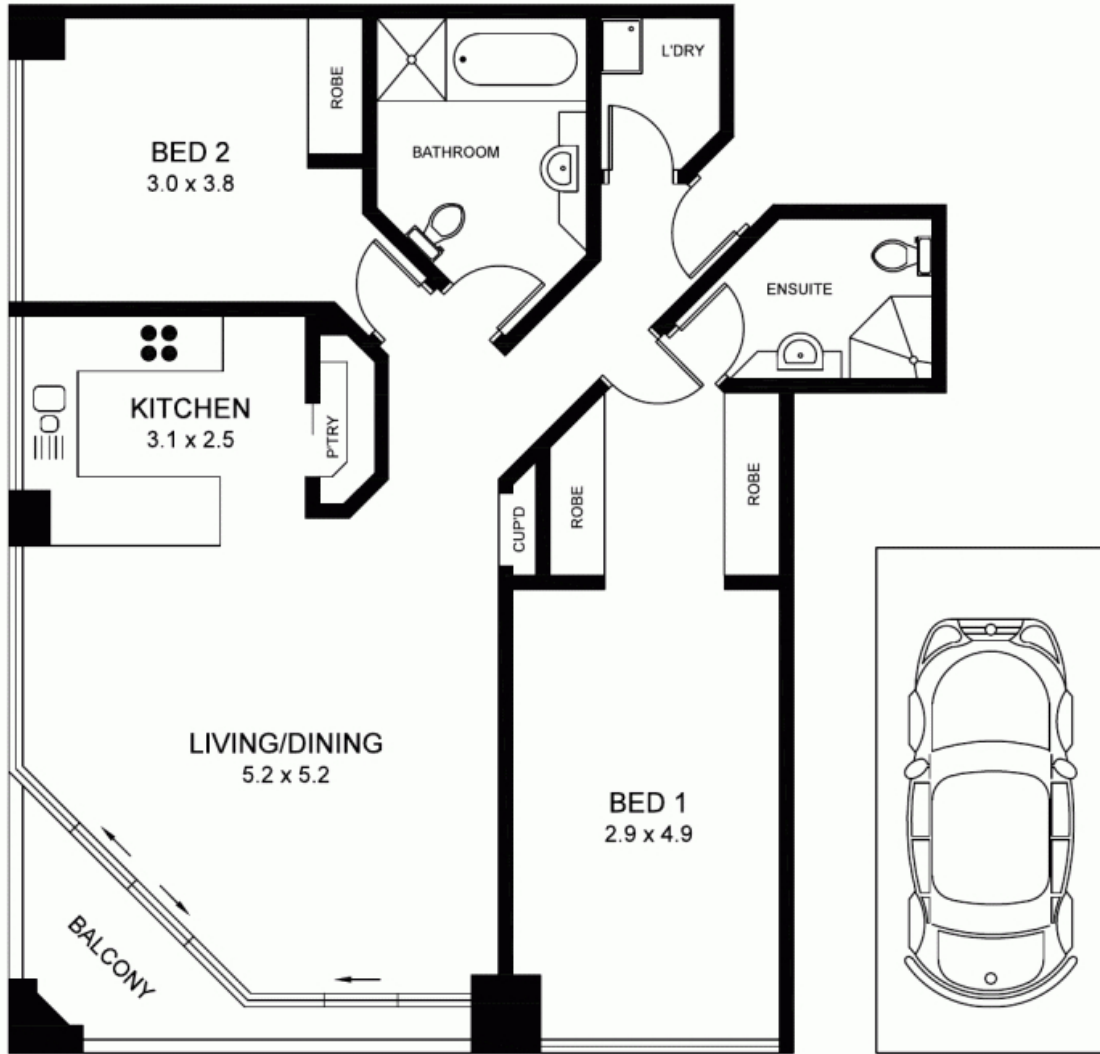
Contact: Anthony Birdsall
0411 190 400

Type: Apartment

Sold Date: 19/04/2016

Land: 91m2

<https://www.laing.com.au>



SECURE UNDERCOVER
CARSPACE



PLANS ARE INDICATIVE OF LAYOUT AND SHOULD NOT BE TAKEN AS AN EXACT REPRESENTATION OF THE PROPERTY. DIMENSIONS AND ASPECT ARE APPROXIMATE.

1304/22 SIR JOHN YOUNG CRESCENT

WOOLLOOMOOLOO

Plans shown are only indicative of layout. Dimensions are approximate.

Woolloomooloo, NSW
1304/22 Sir John Young Crescent