



Elizabeth Bay, NSW

B53/100 Elizabeth Bay Road

0
BED

1
BATH

0
CAR



SOLD IN 3 DAYS BY MATTHEW ALLERTON 0412 790 578

International Lodge, designed by Harry Seidler, who brought BAUHAUS principles to Australia. This 1970's block situated in the prestigious loop of Elizabeth Bay.

- 49sqm studio with large terrace
- Security building with Level access
- Full kitchen with oven
- Modern bathroom
- Internal laundry
- Close proximity to public transport
- Access to Beare Park / Elizabeth Bay

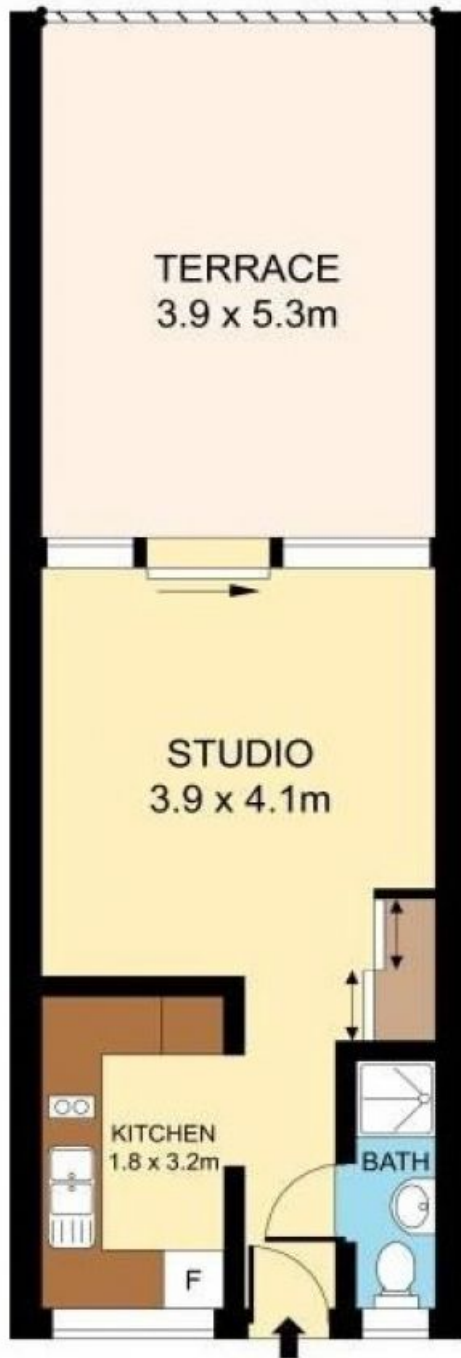
SOLD

Contact: Vicki Laing
0411 88 77 60

Type: Studio

Sold Date: 17/02/2017

<https://www.laing.com.au>



Plans shown are for presentation purposes only and are not part of any legal document or title. They are subject to errors, omissions, inaccuracies and should not be used as a sole and accurate reference. Interested parties should make their own inquiries using independent sources.

53B/100 ELIZABETH BAY ROAD

ELIZABETH BAY

Plans shown are only indicative of layout. Dimensions are approximate.

Elizabeth Bay, NSW
B53/100 Elizabeth Bay Road