



Potts Point, NSW

409/12 Macleay Street

2
BED

1
BATH

0
CAR

LAING

Stunning harbour views from the 'Macleay Regis'

Located on the 4th floor within the prestigious Art Deco landmark 'Macleay Regis', this apartment captures mesmerising uninterrupted views across Elizabeth Bay to The Heads. Exuding elegance and refinement, this spacious company titled residence is immersed in the heart of the 'Parisian' north end of cosmopolitan Potts Point, among fabulous restaurants, cafs and designer boutique shops.

It features two bedrooms, the king size main with a walk-in robe or potential study with window, generous sun-soaked living and dining areas with balcony. Kitchen and bathroom preserved in original condition and throughout lies the original herringbone parquetry floors. Additional features include high ceilings with ornate cornices, lift access, live-in caretaker and secure entry.

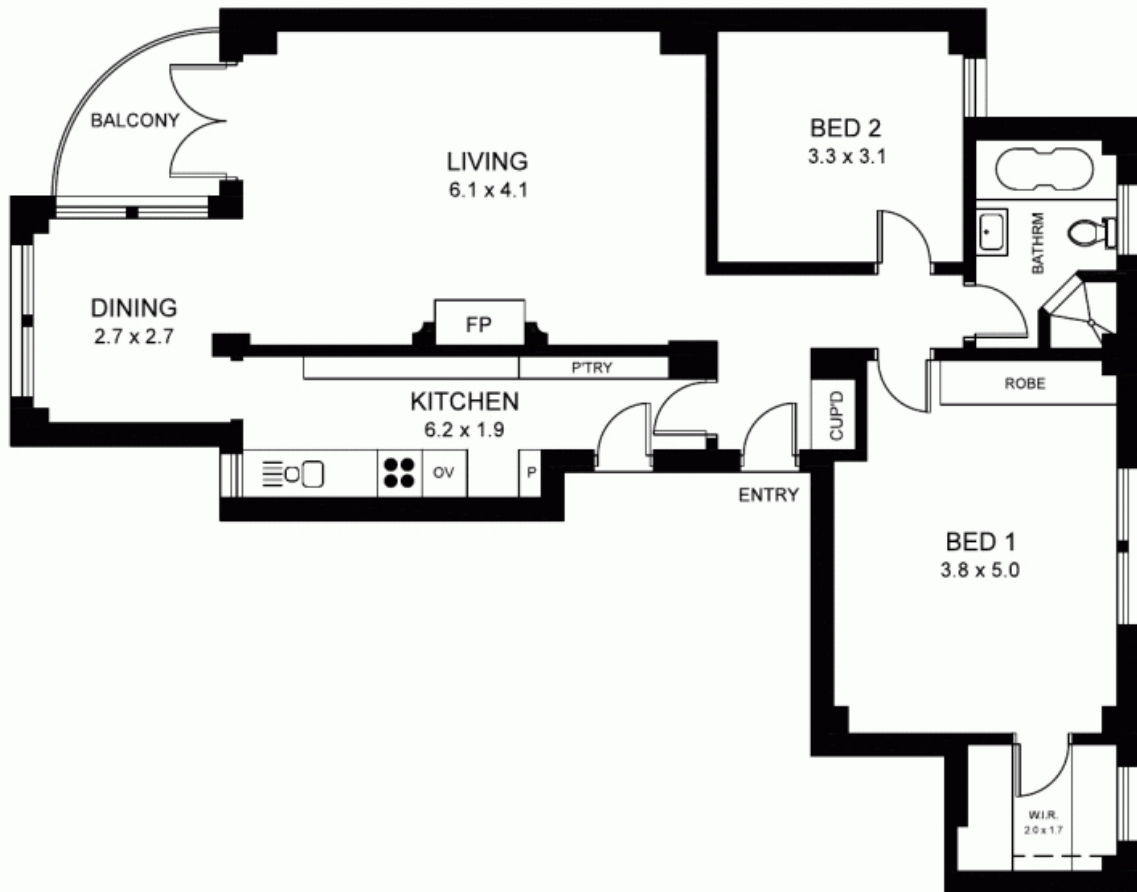
SOLD

Contact: Anthony Birdsall
0411 190 400
Vicki Laing
0411 88 77 60

Type: Apartment

Sold Date: 17/06/2017

<https://www.laing.com.au>



PLANS ARE INDICATIVE OF LAYOUT AND SHOULD NOT BE TAKEN AS AN EXACT REPRESENTATION OF THE PROPERTY. DIMENSIONS AND ASPECT ARE APPROXIMATE.

409/12 MACLEAY STREET

POTTS POINT

Plans shown are only indicative of layout. Dimensions are approximate.

Potts Point, NSW
409/12 Macleay Street