

Rosebery, NSW
112 Tweedmouth Avenue

3
BED

2
BATH

2
CAR



SOLD by TONY DOWLING 0411 402 531

Renovated Double Fronted Semi.

- Ready to just move in
- Three double bedrooms with built-ins
- Character features and easy modern function
- North facing backyard with direct access to Reserve
- Residential tree lined street with no through traffic
- Abundance of natural light and air flow

SOLD

Council Rates: \$1,352/year (approx)

Water Rates: \$764/year (approx)

Contact: Tony Dowling
0411 402 531

Type: House

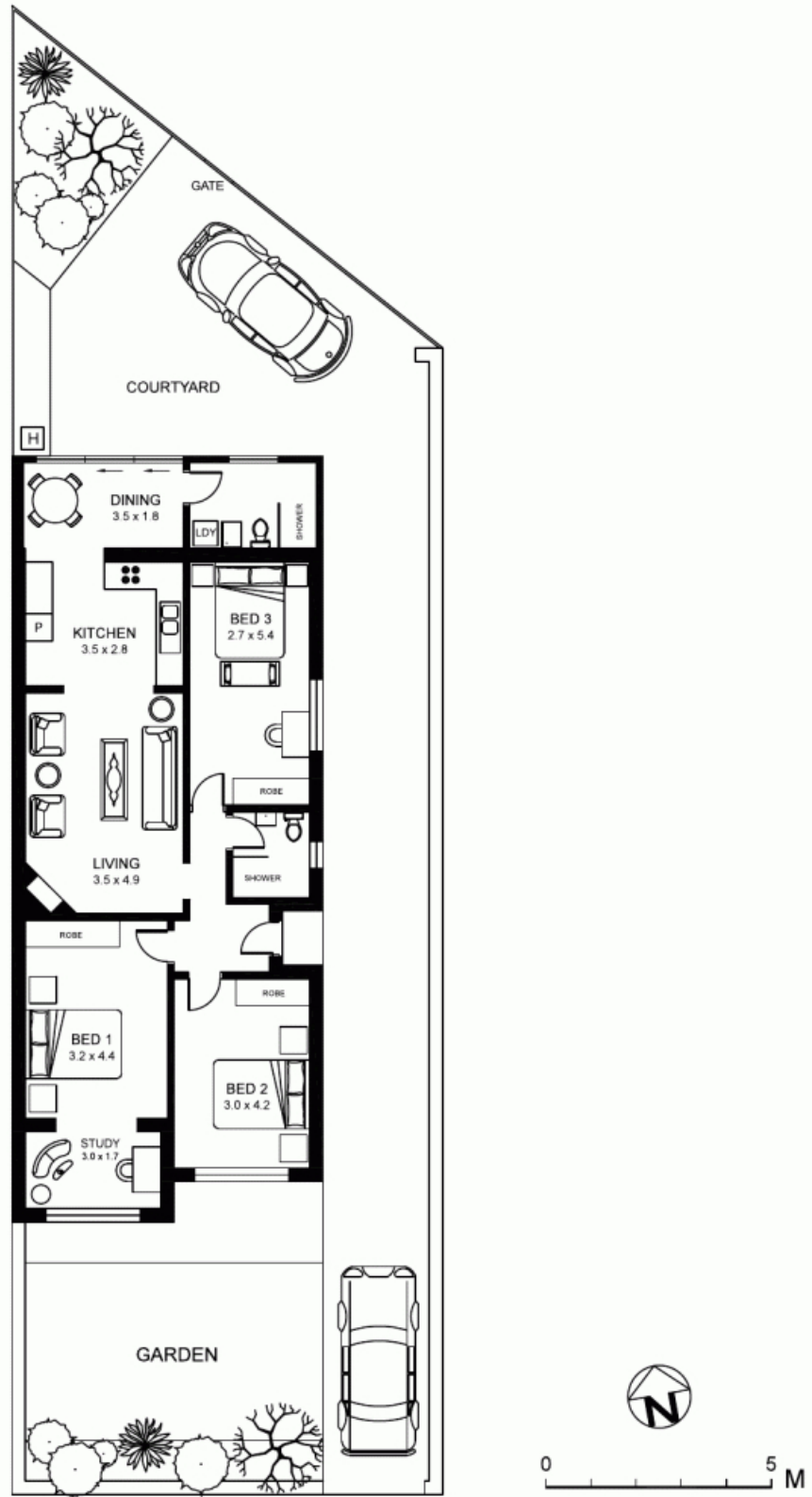
Sold Date: 18/05/2018

Land: 269m²

<https://www.laing.com.au>

Inspect: To inspect please call Tony Dowling on 0411 402 531.

Council: \$338.20pq approx.



PLANS ARE INDICATIVE OF LAYOUT AND SHOULD NOT BE TAKEN AS AN EXACT REPRESENTATION OF THE PROPERTY. DIMENSIONS AND ASPECT ARE APPROXIMATE.

112 TWEEDMOUTH AVENUE

ROSEBERY

Plans shown are only indicative of layout. Dimensions are approximate.

Rosebery, NSW
112 Tweedmouth Avenue