



**Potts Point, NSW**  
201-202/5 Manning Street

**3**  
BED

**2**  
BATH

**1**  
CAR



**Sold by Vicki Laing 0411 88 77 60 and Anthony Birdsall 0411 190 400**

In the heart of fashionable Potts Point, this spacious light-filled north facing apartment within the Emil Sodersten designed Art Deco building 'Wychbury' epitomizes chic inner-city living at its best. Spanning the entire 2nd floor and with lift access, the apartment has been beautifully re-designed by Paul Ridgway from Ridgway Sassella Interior Design.

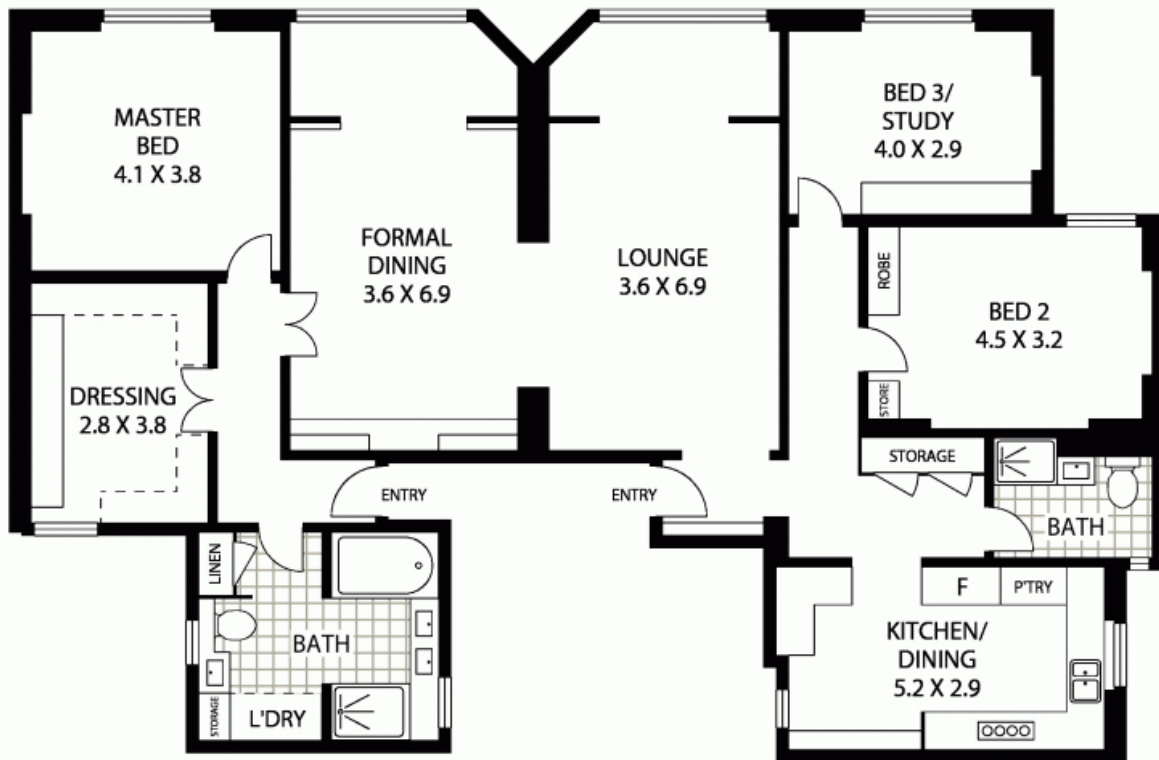
Superbly finished with bespoke joinery, American oak parquet flooring, terrazzo benchtops and classical dentil ceiling detail the apartment maintains an Art Deco feel, yet is modern, functional and stylish. The fully integrated kitchen and large living and dining area featuring a built-in Arabescato marble and panelled wood credenza allows easy entertaining in the most elegant of surroundings. Adjoining the master suite is an enormous

**SOLD**  
**Contact:**

Vicki Laing  
0411 88 77 60  
Anthony Birdsall  
0411 190 400

**Type:** Apartment  
**Sold Date:** 30/05/2019

<https://www.laing.com.au>



LEVEL TWO



**201-202/5 MANNING STREET**

**POTTS POINT**

**Floor Plan Disclaimer:** MTG Media floor plans / site plans are intended as an approximate guide only. No representations or warranties of any nature are given or intended and any person or company using this information other than as a guide should always rely on their own enquiries. MTG Media marketing services - 1300 133 145 - Photography, Floor plans, Copywriting, Video, Drone - [www.mtgmedia.com.au](http://www.mtgmedia.com.au)

Plans shown are only indicative of layout. Dimensions are approximate.

**Potts Point, NSW**  
201-202/5 Manning Street