



Potts Point, NSW
16/165-167 Victoria Street

1
BED

1
BATH

0
CAR

LAING

Contemporary Designer Crosspoint Apartment

1 Bedroom 1 Bathroom

Cleverly transformed using designer finishes this contemporary one-bedroom apartment in the heart of vibrant Victoria Street, creates the perfect opportunity to enjoy an exciting inner-city lifestyle. Comprising generous light-filled rooms including a spacious living and dining area, a sun-drenched study off the kitchen, and a magnificent common rooftop terrace and BBQ area commanding spectacular city skyline and harbour views, beautifully appointed for casual al fresco entertaining. This apartment is ready to be purchased as a great first home, city fringe pied-a-terre or investment.

- Located in a quiet position on the 2nd floor within Secure Building

SOLD

Council Rates: \$281/year (approx)

Water Rates: \$154/year (approx)

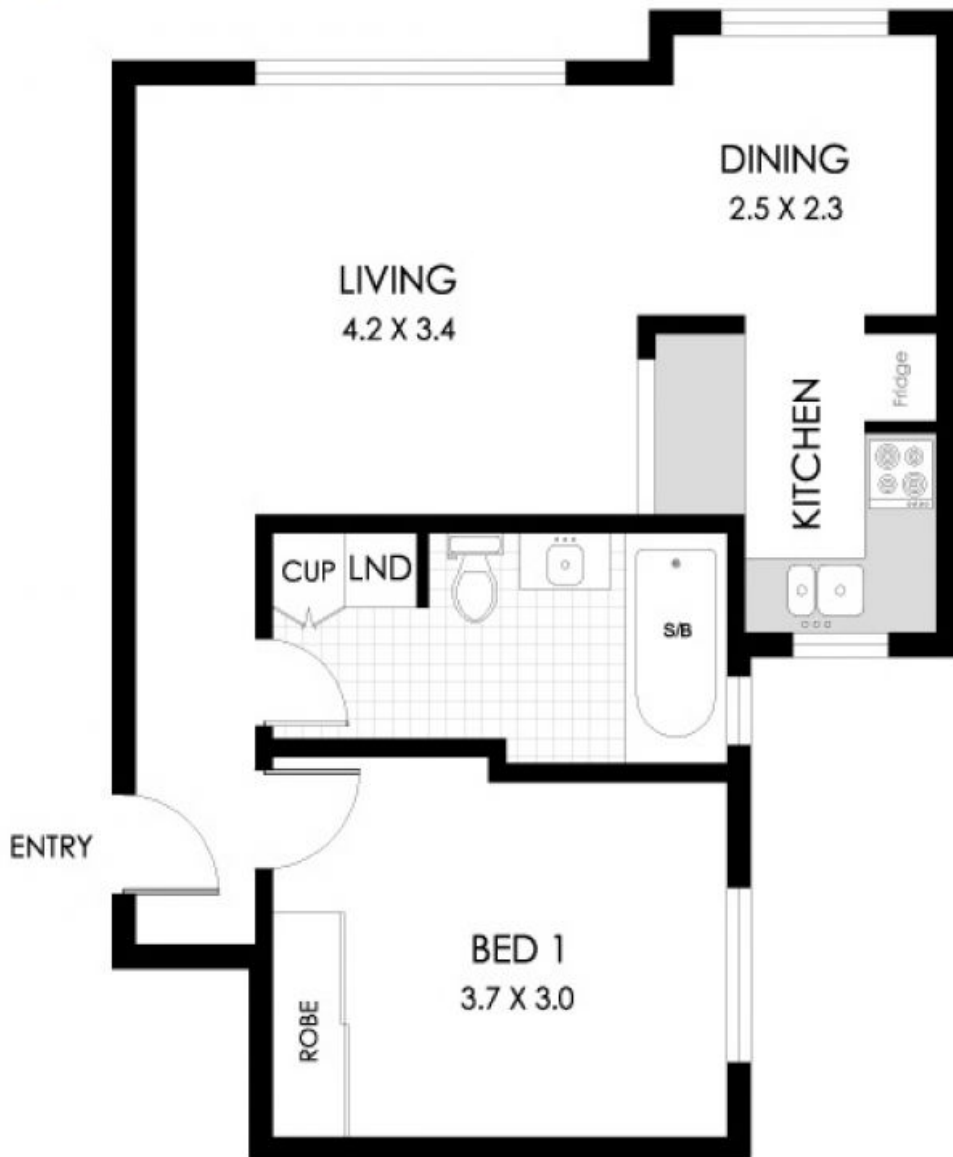
Strata Fees: \$4,402/year (approx)

Contact: Vicki Laing
0411 88 77 60
Steven Bullock
0413 949 433

Type: Apartment

Sold Date: 08/10/2020

<https://www.laing.com.au>



PLANS SHOWN ARE ONLY INDICATIVE OF LAYOUT. DIMENSIONS ARE APPROXIMATE

All information contained herein is gathered from sources we believe to be reliable, however we cannot guarantee its accuracy and interested persons should rely on their own enquiries. Dimensions are approximate.



16/165 VICTORIA STREET

POTTS POINT
Apartment Size: 47m²

Plans shown are only indicative of layout. Dimensions are approximate.

Potts Point, NSW
16/165-167 Victoria Street