



## Potts Point, NSW

908/73 Victoria Street

**2**  
BED

**1**  
BATH

**1**  
CAR

**LAING**

### Amazing City, Opera House and Bridge Views in "Hordern Place"

Move into to this 5th floor security apartment with balcony, and take in a spectacular panorama, with views stretching over the Harbour and Domain to the famous forms of the Opera House and Sydney Harbour Bridge.

This light-filled 2 bedroom strata apartment offers comfortable interiors with exceptional further potential for those seeking to update.

Create a stylish contemporary home in a chic cosmopolitan setting, moments from the harbour foreshore, popular local cafes and public transport.

Main bedroom with built-in wardrobes and views, plus a spacious 2nd bedroom offering a blank canvas.

Spacious kitchen, large walk-through bathroom plus separate laundry facilities.

### Auction: Tue, 14 Dec 2021 @5:00pm "Kingsclere", Ground Floor 1/1 Greenknowe Ave, Elizabeth Bay

**Council Rates:** \$284/qtr (approx)

**Water Rates:** \$157/qtr (approx)

**Strata Fees:** \$1,834/qtr (approx)

**View:** Wed, 8 Dec 2021 @12:00 pm - 12:30 pm

Sat, 11 Dec 2021 @12:00 pm - 12:30 pm

**Contact:** Steven Bullock

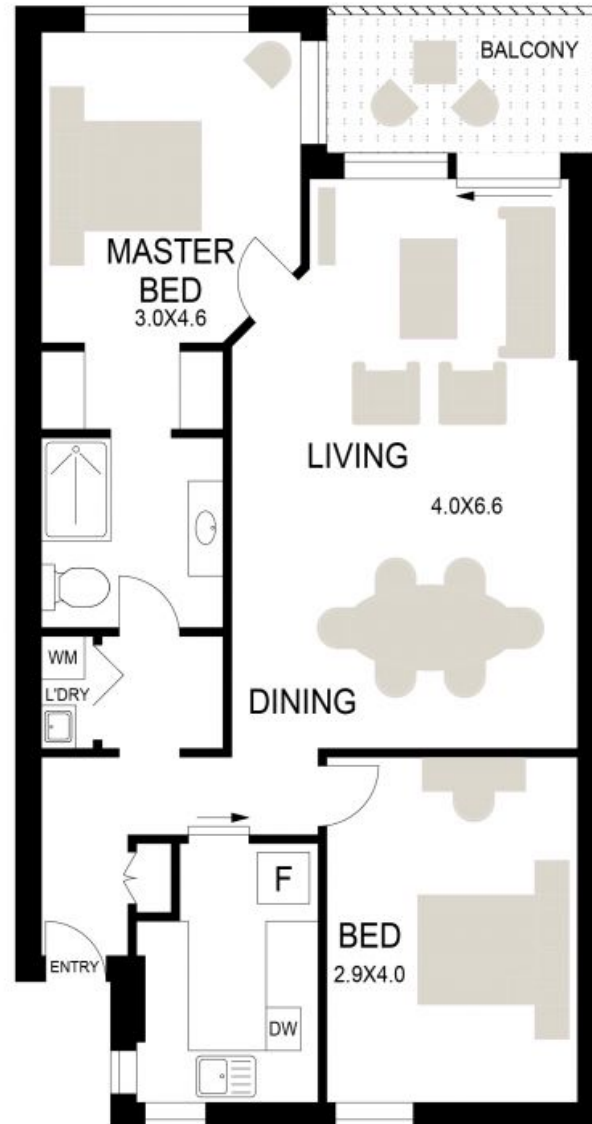
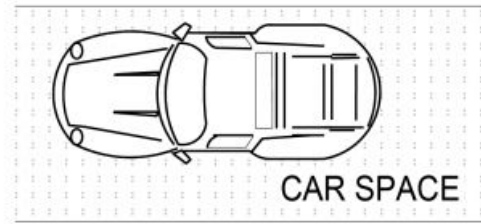
0413 949 433

Vicki Laing

0411 887 760

**Type:** Apartment

<https://www.laing.com.au>



908/73 VICTORIA STREET,  
POTTS POINT

DISCLAIMER : WE HAVE OBTAINED ALL INFORMATION IN THIS DOCUMENT FROM SOURCES WE BELIEVE TO BE RELIABLE. HOWEVER WE CANNOT GUARANTEE ITS ACCURACY. PROSPECTIVE PURCHASERS ARE ADVISED TO CARRY OUT THEIR OWN INVESTIGATIONS

Plans shown are only indicative of layout. Dimensions are approximate.

**Potts Point, NSW**  
908/73 Victoria Street