



## Elizabeth Bay, NSW

34/1 Holdsworth Avenue

1  
BED

1  
BATH

0  
CAR

 LAING

### 1 Bedroom Peaceful Parkside Apartment in 'Elizabeth Gardens'

- \* Spacious & stylish light filled interiors with polished timber floors.
- \* Generous double bedroom with Northerly aspect and floor to ceiling built-ins.
- \* Renovated throughout with smart kitchen, and internal laundry.
- \* Intercom & lift access in boutique security building of 33.
- \* Adjacent to Rushcutters Bay, Elizabeth Bay village shops and bus-stop, a stroll to Beare Park, Potts Point & CBD.
- \* Great first home or investment potential.
- \* Company Title

Auction: Tuesday 12th July, at 4:00pm

Venue: "Kingsclere" Ground Floor, 1 Greenknowe Avenue, Elizabeth Bay

**Auction: Tue, 12 Jul 2022 @ 4:00pm**  
**"Kingsclere", Ground Floor 1/1 Greenknowe Ave, Elizabeth Bay**

**Council Rates:** \$284/qtr (approx)

**Strata Fees:** \$984/qtr (approx)

**View:** Wed, 29 Jun 2022 @ 12:00 pm - 12:30 pm

Sat, 2 Jul 2022 @ 10:00 am - 10:30 am

Wed, 6 Jul 2022 @ 12:00 pm - 12:30 pm

Sat, 9 Jul 2022 @ 10:00 am - 10:30 am

**Contact:** Steven Bullock

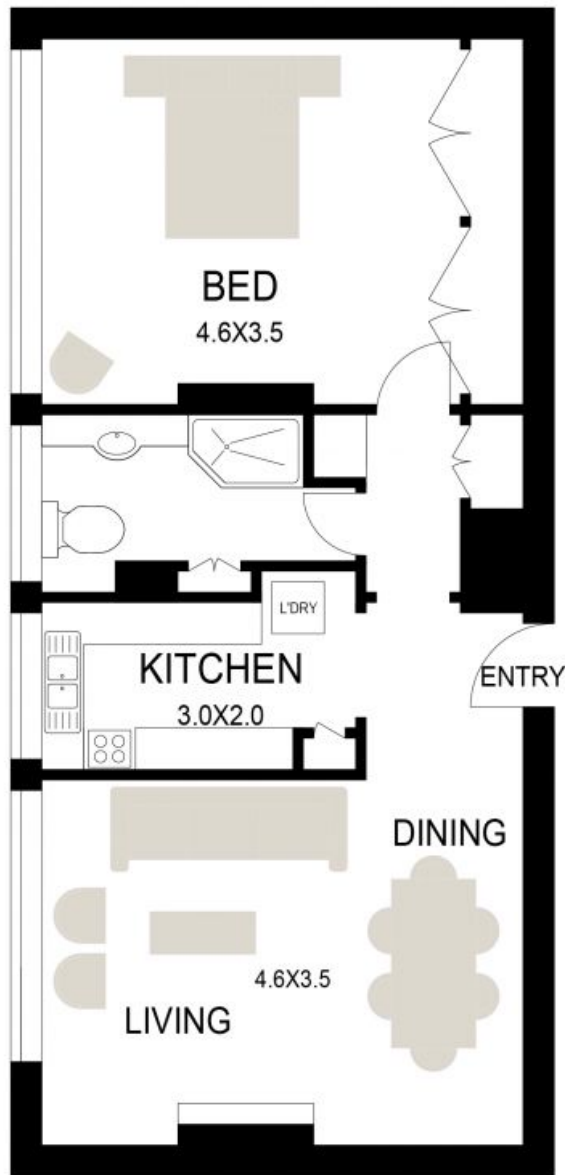
0413 949 433

Vicki Laing

0411 887 760

**Type:** Apartment

<https://www.laing.com.au>



## LEVEL THREE



34/1 HOLDSWORTH AVENUE,  
ELIZABETH BAY

DISCLAIMER : WE HAVE OBTAINED ALL INFORMATION IN THIS DOCUMENT FROM SOURCES WE BELIEVE TO BE RELIABLE. HOWEVER WE CANNOT GUARANTEE ITS ACCURACY. PROSPECTIVE PURCHASERS ARE ADVISED TO CARRY OUT THEIR OWN INVESTGATIONS

Plans shown are only indicative of layout. Dimensions are approximate.

**Elizabeth Bay, NSW**  
34/1 Holdsworth Avenue