



Woolloomooloo, NSW
901/63 Crown Street

2
BED

2
BATH

1
CAR

LR LAING

Crown Gardens – 2 Bedroom Apartment with Parking
Urban Resort Sophistication in Prime Inner Sydney location.

Enjoy an enviable lifestyle of convenience and style in this spacious 2 bedroom apartment. Drenched in natural light with a panoramic north/west aspect, generous outdoor space, two generous bedroom and bathrooms, open plan living and modern appliances. This executive home has a luxurious ambiance and phenomenal privacy offering low maintenance living.

'Crown Gardens' is an immaculately maintained resort style complex with a port cochere entrance, 24-hour concierge service, on-site building manager, state-of-the-art security, secure basement parking area (for residents & visitors) and excellent resident facilities including resort-style landscaped gardens with swimming pool & barbecue area, gymnasium, sauna and meeting/ function room. This highly regarded building is only moments to the heart of the city, harbour foreshores, Botanic Gardens

and East Sydney eateries.

Spacious open plan living and dining flanked by floor-to-ceiling

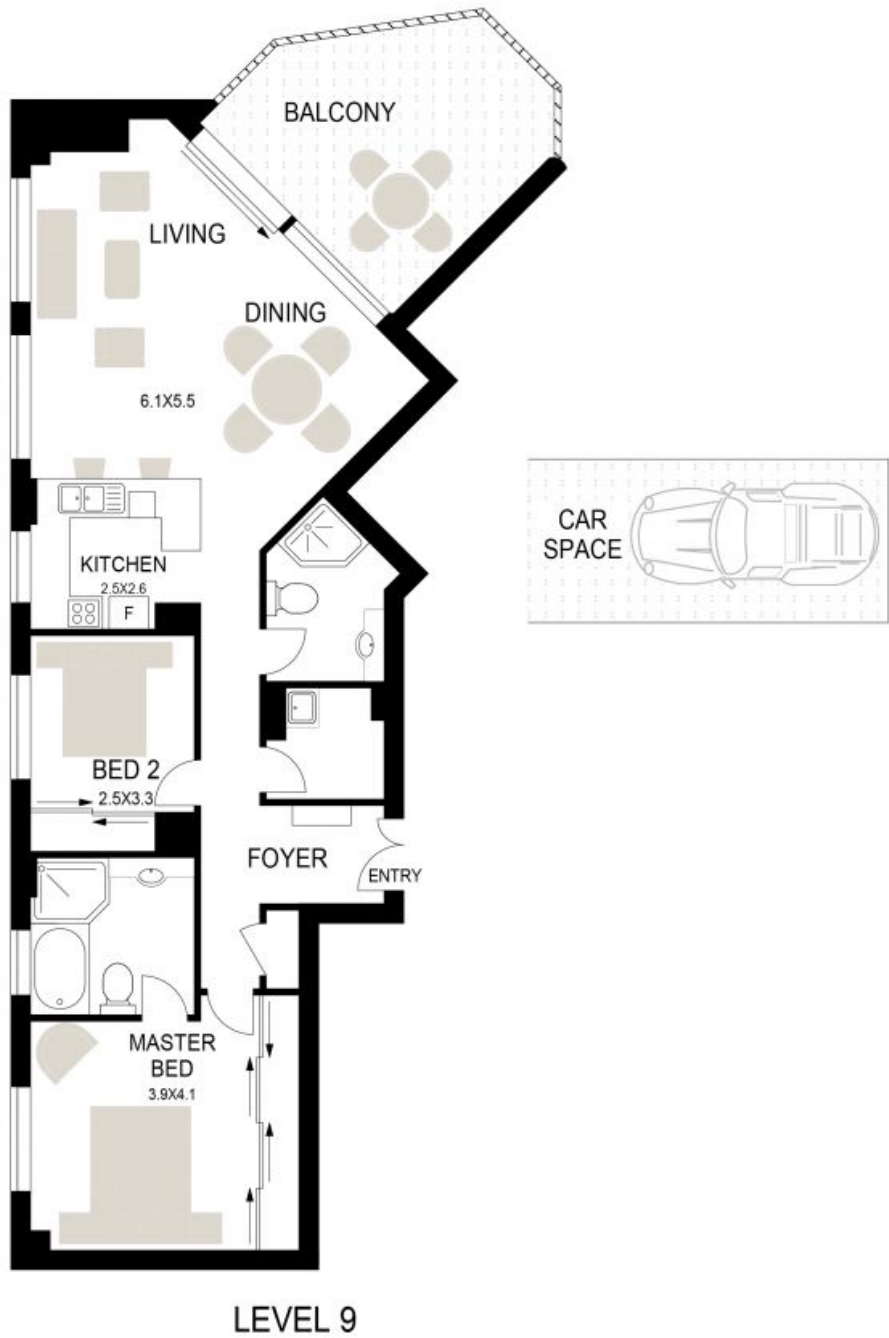
LEASED

Contact: Vicki Laing
0411 887 760

Type: Apartment

Date Available: 30/07/2022

<https://www.laing.com.au>



901/63 CROWN STREET,
WOOLLOOMOOLOO

DISCLAIMER : WE HAVE OBTAINED ALL INFORMATION IN THIS DOCUMENT FROM SOURCES WE BELIEVE TO BE RELIABLE. HOWEVER WE CANNOT GUARANTEE ITS ACCURACY. PROSPECTIVE PURCHASERS ARE ADVISED TO CARRY OUT THEIR OWN INVESTIGATIONS

Plans shown are only indicative of layout. Dimensions are approximate.

Woolloomooloo, NSW
901/63 Crown Street