



Potts Point, NSW

1105/73 Victoria Street

1
BED

1
BATH

1
CAR



LAING

SOLD by ANTHONY BIRDSALL 0411190 400

Set at the prized harbour end of tree-lined Victoria Street and commanding fabulous day and night views of the CBD, Royal Botanic Gardens, Opera House, Harbour Bridge and Woolloomooloo Bay. It features an open living and dining flowing onto the covered private balcony, the bright and airy layout is visually extended by Sydney's iconic skyline. More recent changes to the apartment include renovated kitchen with a superb calibre of finishes; starlight white Ceaserstone bench top; mirrored splashbacks, stainless steel appliances and custom cabinetry. The unusually large bedroom has built-ins and extends to the stylish Gusto sawcut marble ensuite with frameless glass shower. Plus separate laundry

With easy access to secure parking, terrace gardens, pool, sauna, nearby cafes and trains, this city pad is an exceptional lifestyle purchase set at the prized harbour end of tree-lined Victoria Street.

SOLD

Council Rates: \$944/year (approx)

Water Rates: \$433/year (approx)

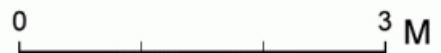
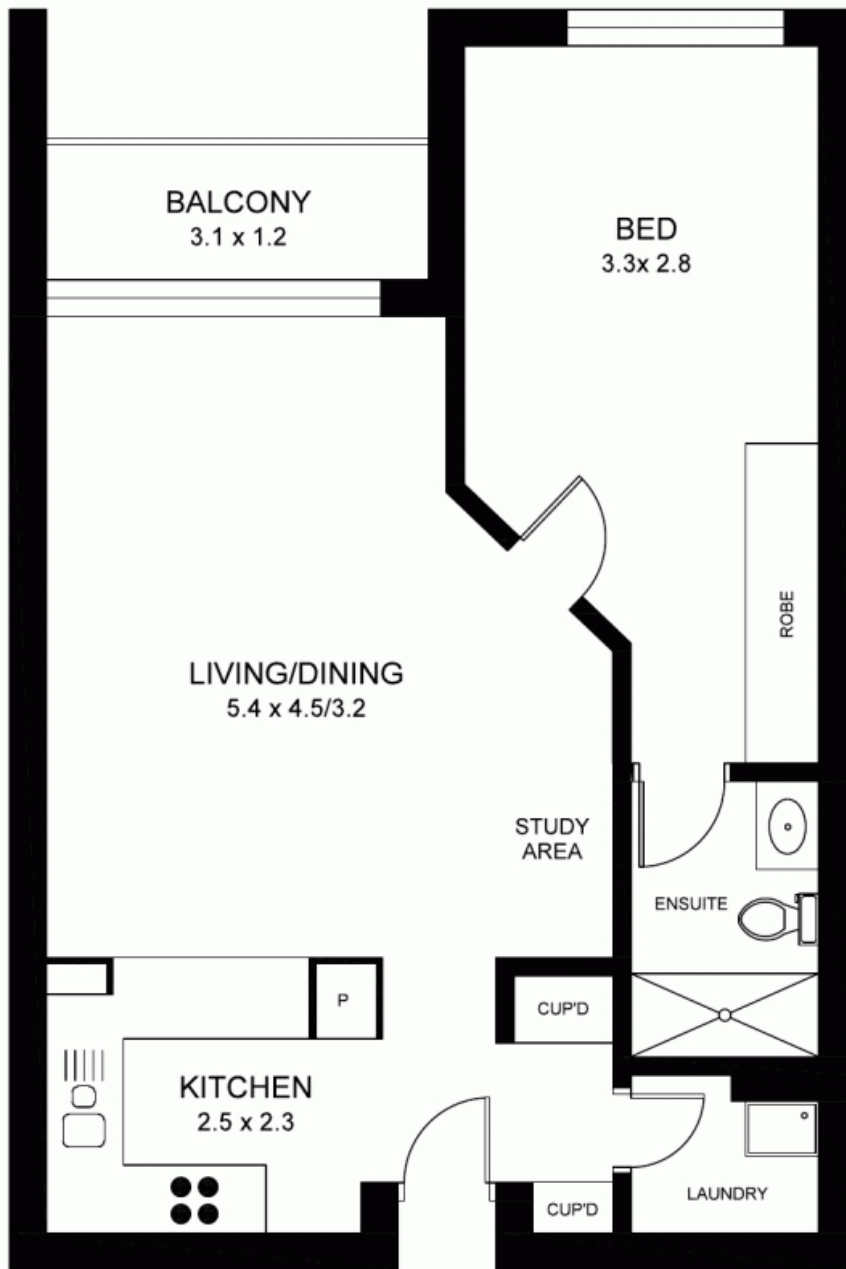
Strata Fees: \$6,246/year (approx)

Contact: Anthony Birdsall
0411 190 400

Type: Apartment

Sold Date: 30/10/2015

<https://www.laing.com.au>



PLANS ARE INDICATIVE OF LAYOUT AND SHOULD NOT BE TAKEN AS AN EXACT REPRESENTATION OF THE PROPERTY. DIMENSIONS AND ASPECT ARE APPROXIMATE.

1105/73 VICTORIA STREET

POTTS POINT

Plans shown are only indicative of layout. Dimensions are approximate.

Potts Point, NSW
1105/73 Victoria Street